

## Complete Line of the Electron Series Products

### Enterprise Outdoor

**ENH1750EXT**  
Wireless N450Mbps+ AC1300Mbps Outdoor Dual Concurrent AP

**ENS620EXT**  
Dual Band AC1300 Outdoor Long Range Wireless Access Point

### Outdoor Bridges/AP

**ENH500**  
Wireless-N 300Mbps 5GHz Outdoor CB/AP

**ENH202**  
Wireless-N 300Mbps 2.4GHz Outdoor CB/AP

**EnStation5-AC**  
11ac wave2 Wireless PTP Client Bridge

**EnStation AC**  
Wireless AC 867Mbps 5GHz Outdoor CPE

**EnStation 5**  
Wireless-N 300 Mbps 2.4GHz Outdoor CPE

### Outdoor Bridges/AP

**ENS500EXT-AC**  
11ac wave2 Wireless AP/Client Bridge

**ENS500-AC**  
11ac wave2 Wireless PTP Client Bridge

**ENS202EXT**  
2.4GHz, Long Range Wireless N300 Outdoor CB/AP

**ENS500**  
5GHz, Long Range Wireless N300 Outdoor CB/AP

**ENS202**  
2.4GHz, Long Range Wireless N300 Outdoor CB/AP

### Ceiling Mount Indoor AP

**EAP2200**  
Tri-Band 11ac Wireless Access Point

**EAP1300-EXT**  
11ac wave2 Wireless Access Point

**EAP1300**  
11ac wave2 Wireless Ceiling Mount Access Point

**EAP1750H**  
11AC Long Range Wireless Ceiling Mount Access Point

**EAP1200H**  
802.11a/b/g/n/ac Dual Radio Concurrent Ceiling Mount Access Point

**EAP350**  
Wireless-N 300Mbps Ceiling Mount Gigabit AP

### Desktop/Wall-Mount Indoor AP/CB

**ECB1750**  
Wireless N450Mbps+ AC1300Mbps Multi-Function Dual Concurrent AP/CB

**ECB1200**  
Wireless N300Mbps+ AC867Mbps Multi-Function Dual Concurrent AP/CB

### Sector Antenna

**SA2216**  
2.4GHz, 16dBi, 2x2 MiMo

**SA5219**  
5GHz, 19dBi, 2x2 MiMo

**SA2312**  
2.4GHz, 12dBi, 3x3 MiMo

**SA5315**  
5GHz, 15dBi, 3x3 MiMo

### Accessories

**PoE Adapter**

**EPA5012GP**  
Enterprise-Class Single Port PoE Adapter

**EPA2410GP**  
Enterprise-Class Single Port PoE Adapter

**EPA5006GAT**  
802.3at/af Compatible Gigabit Single Port PoE Adapter

**EPA5006GP**  
Passive 54V Gigabit Single Port PoE Adapter

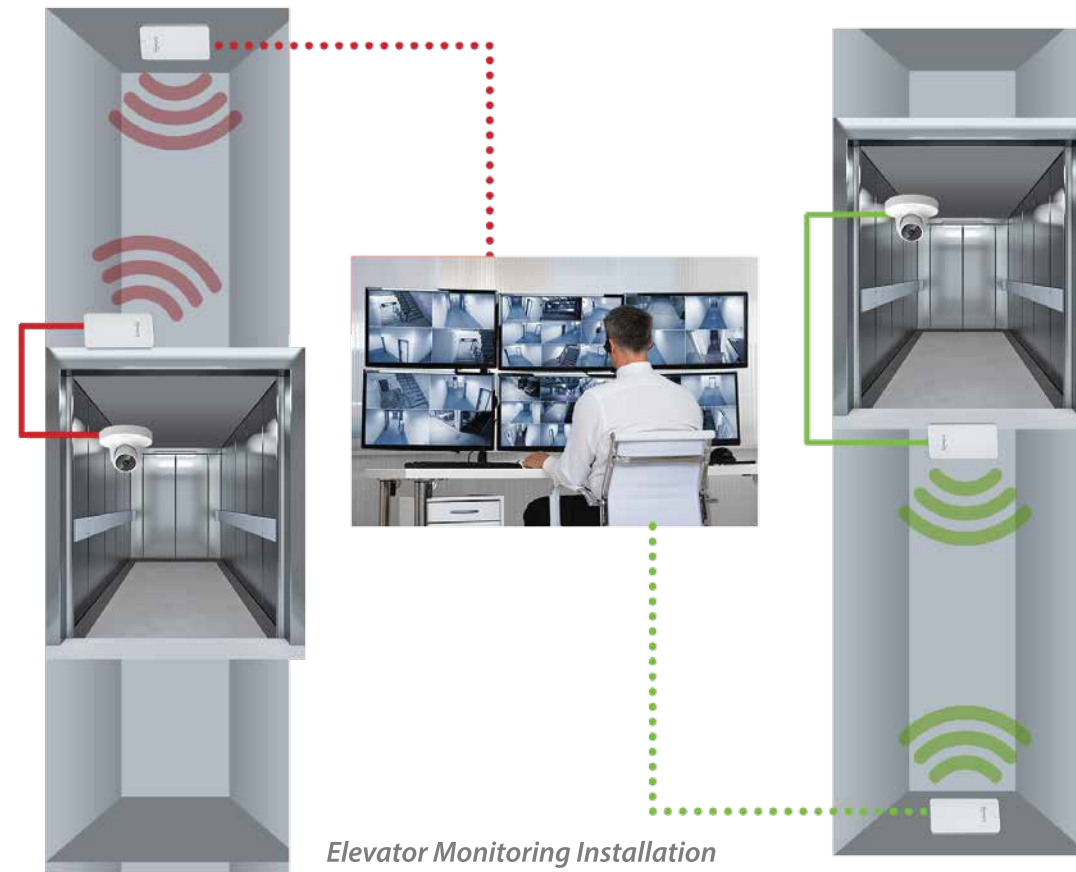
**EPA2406FP**  
Passive 24V Compatible 10/100 Single Port PoE Adapter

**PoE Converter**

**EPD-4824**  
Gigabit 802.3at/af PoE Converter

## The Electron Series : Bridging Your Networks

### Indoor Wireless Bridge

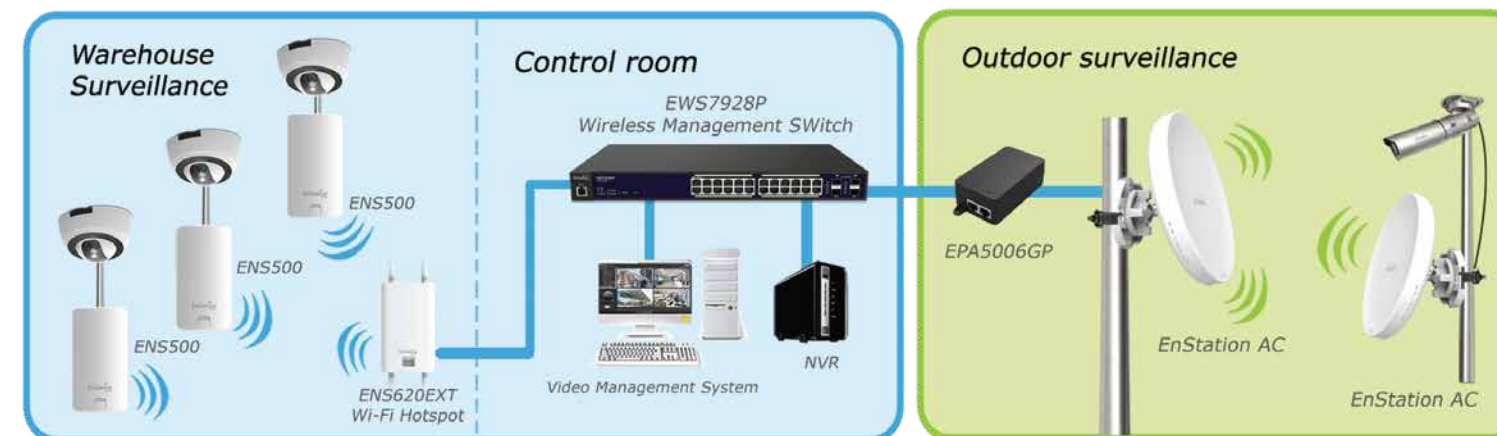


**Elevator Monitoring Installation**  
Recommended Models : ENH500, ENS500

Designed for :

- Wi-Fi Point-to-Point
- Wi-Fi Point-to-Multi-Point
- Wi-Fi Surveillance

## Wireless Surveillance Planning & Solution



### Office

Singapore  
EnGenius Networks Singapore Pte Ltd  
215 Henderson Road #01-04  
Henderson Industrial Park, Singapore 159554  
(+65) 6227 1088  
www.engenlustech.com.sg | EnGenius APAC

### Authorized Dealer



© 2017 EnGenius Networks Singapore Pte, Ltd.  
Information is subject to change without prior notice. All rights reserved.

**EnGenius®**  
The Electron & EnTurbo Series

WAVE 2  
802.11ac



Expanded Network Solution

# Industry Leader in Next Generation 11ac Wave 2 Turbocharge Wi-Fi • Future Proof • Crowd Proof Networks



## Gigabit Speeds for a Variety of Needs

All EnGenius Electron Series IEEE802.11a/b/g/n or 802.11ac Access Points feature Gigabit ports for connectivity to the network to optimize throughput of bandwidth-intensive or sensitive applications like video streaming and video conferencing, telephony or large file transfers.

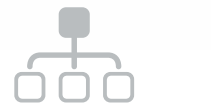
## Comprehensive Security

The EnGenius Electron Series supports robust security features such as SSL Certificate and 802.1x. In addition, the Electron Series Switches also support a complete line up of advanced Layer 2 features; including secure control connections between Switches and Access Points, Port mirroring, STP/RSTP/MSTP, Link Aggregation Control Protocol (LACP), SNMP v1/v2/v3, RMON, and ACL for extensive network security and more.

To protect internal Electronics, the Electron Series Outdoor Access Points have been mounted in an IP55/IP65/IP68 rated enclosures, one of the highest waterproof and dustproof ratings available, designed to withstand extremely harsh environmental conditions. The Electron Series Indoor Access Points come housed in discreet white housings to blend in with any environment, and all Electron Series Switches come with the ability to be either desk or rack mounted.

## Multiple SSID-to-VLAN tagging

Each Dual Band EnGenius Electron Series Access Point is capable of providing 8 separate SSIDs per frequency band (16 total) and each SSID can be tagged to an established VLAN on the network.



## Power Source

Electron Series PoE/PoE+ Gigabit Switches give IT managers settings and tools to monitor traffic flow, load and per port connectivity and usage, as well as to manage or quickly adjust the settings or performance of their wired network in real time or reconfigure authorized access to the network on an individual user level.



## Leader in Long Range Wi-Fi

The reputation that EnGenius Electron Series Access Points enjoy is attributable to their high (dBm) transmit power, their strong receive sensitivity and the engineering, tuning and overall design that goes into each of the AP's antenna array. It's that technology expertise when applied that pushes wireless signals farther while at the same time delivering more enhanced receive sensitivity to connect with remote client devices than more expensive enterprise-class devices. Internal antennas in Electron Series ceiling-mount Access Points can penetrate up to three floors in multiple-story buildings to keep users connected which makes for more cost-effective deployments.

EnGenius Electron Series Outdoor Access Points with internal directional antennas in optimal conditions can push wireless signals in excess of two miles. And for those IT managers or users who need to push signals even farther, many Enterprise Network Series Outdoor Access Points and Indoor desktop Access Point/Client Bridges feature detachable antennas that can be replaced with even higher-gain third-party antennas.



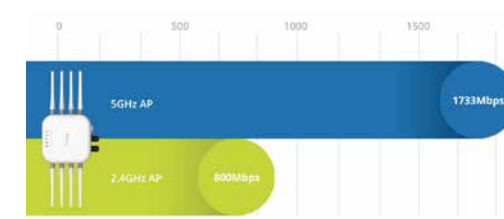
## Multiple Mode AP/Client Bridges for Virtually any type of Network

Most of the Access Points in the EnGenius Electron Series can be configured as standard Access Points or Client Bridges. In a point-to-multi-point scenario, an AP with omni-directional antennas can be configured as the main access point connected to a wired network while APs with internal high-gain directional antennas can point back to it. This gives IT managers the ability to leverage the longer range that the APs with internal directional antennas have because of their more focused signal beam. Most of the Electron Series dual-band Access Points can be configured as a standard AP in one frequency (typically the 2.4GHz band) and as a WDS bridge (typically in the 5GHz band) at the same time. This is ideal for a campus scenario where client devices connect to a company or school network and its internet connection on the 2.4GHz band, while the 5GHz band serves as a backhaul to push the traffic back to the main AP. This eliminates the need to trench for cabling between the main network and the more remote dual-band APs

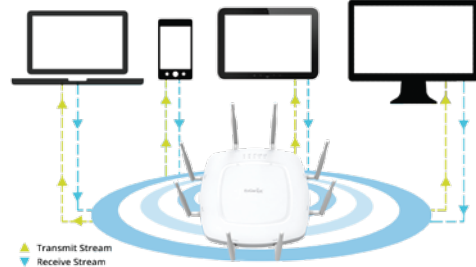
## Product & Technology Highlights

### 1 Next Generation 11ac Wave 2 - Ultra-Fast Future Proof & Crowd Proof Networks

Delivers the highest available speeds for Wi-Fi devices reaching 2.5Gbps



Four Spatial streams and dual-concurrent MU-MIMO radio operation sends beams to multiple users simultaneously, creating increased network capacity.



Intelligent Wi-Fi and Beamforming technology focus signals directly to client devices, providing optimal, reliable reception even in densely crowded environments.



### 2 Eliminate additional PoE to IP CAM with a single PoE supply

EnStationAC supports 802.3at PoE input 2nd PSE out\* which is in compliance with 802.3af standard.

- Power over Ethernet (PoE) : Compliant with IEEE 802.3at input or proprietary 54V input
- Power Supply Ethernet (PSE) : IEEE 802.3at PoE supply to other PoE devices

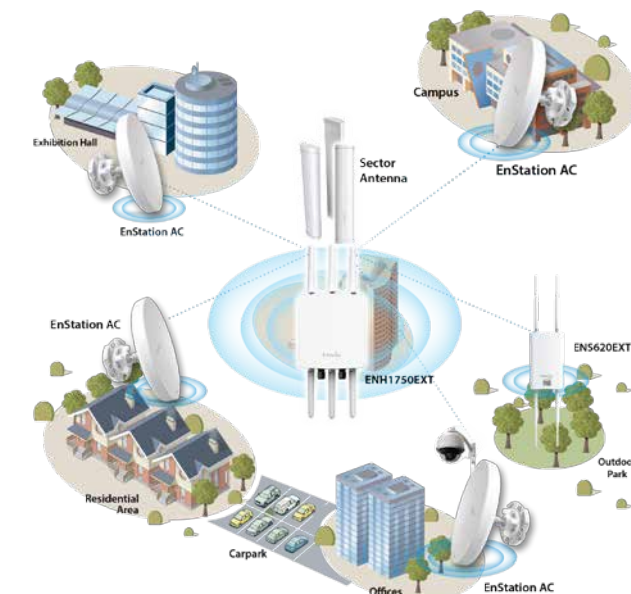


### 3 Point-to-(Multi) Point Wireless Networking



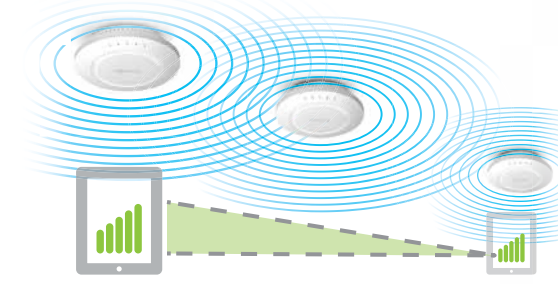
ENS500 : 1-3km  
EnStation AC : 5-10km\*  
ENH1750EXT : 10-20km  
(with high gain directional antenna)

\*EnStation AC Wireless Throughput Test Result: Achieved up to 440Mbps in 1km PtP.



## Durable and Waterproof Designs

A lot of thought and care goes into the design and durability of EnGenius Electron Access Point housings. Electron Series ceiling mount Access Points feature award-winning housing designs that blend with other infrastructure appliances like smoke detectors or alarms mounted on ceilings. These designs actually minimize and eliminate theft of the Access Point in hospitality, school and other deployments. Electron Series Outdoor Access Point housings feature IP55/IP65/IP68 water-proof ratings which can withstand torrential rain, harsh sleet, freezing weather, snow, dust or intense and prolonged desert heat. Connectors for Ethernet cables on Electron Series Outdoor APs are also shielded from moisture to prevent electrical shortage resulting in reliable high-powered, long-range performance throughout the long-life of the product.



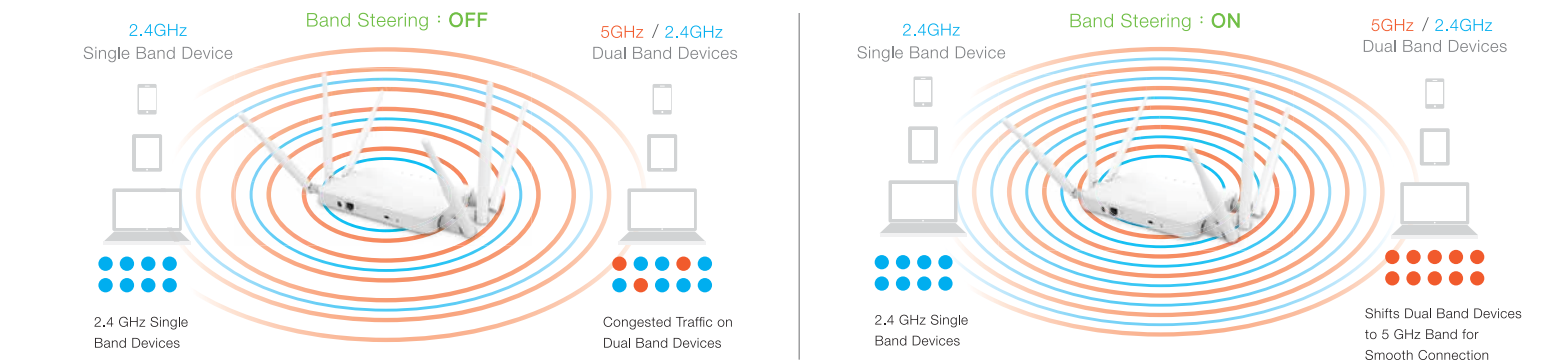
## Fast Roaming

Because Staying Connected Can Be A Moving Experience

Some Electron Series Access Points also support Roaming for clients authenticated to a RADIUS server. This means that employees can be constantly connected to the network - whether they are warehouse workers scanning and capturing barcode information, employees on Wi-Fi phone calls while walking to meetings on another part of a corporate campus, healthcare professionals capturing patient information on mobile devices, or security personnel who need uninterrupted video surveillance on a mobile device when they are alerted to and making their way to the location of an incident.

## Band Steering (Available on Dual Band Products)

For effective spectrum usage, several of Electron Series Access Point includes a Band Steering option which when applied, automatically shifts the connection of Dual-Band clients to the 5GHz band where is less traffic and more available RF channels.

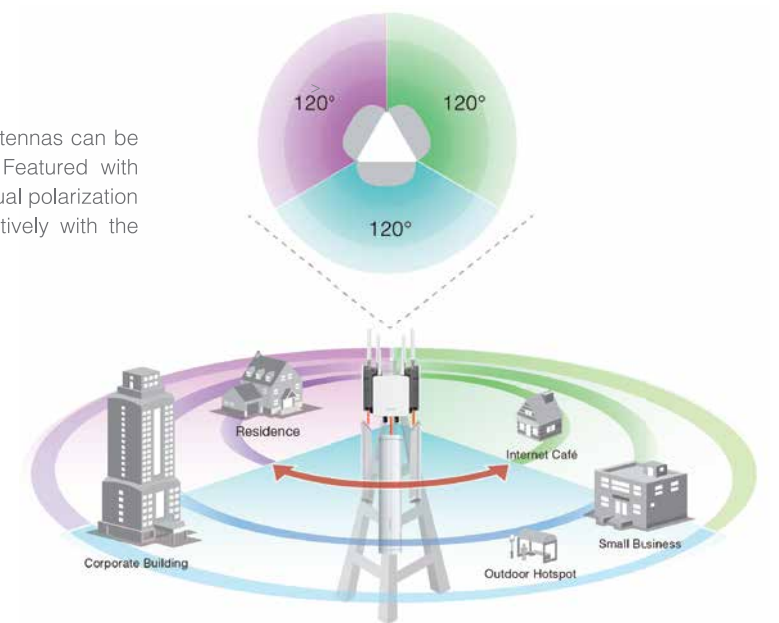


## Make Reliable 360° Radiation Easier

With the sector-shaped radiation pattern characteristics, EnGenius Sector Antennas can be versatily applied to a variety of Point-to-Multi-Point (PtMP) deployment. Featured with horizontal beamwidth up to 120°, the 3x3 (or 2x2) MIMO technology and the dual polarization design, network installers can easily build a 360° surrounding radio effectively with the coverage up to 5kms.

## Ideal for PtMP Deployment

- WISP Mobile Wi-Fi Service
- Telecommunication
- Transportation Data Collection
- Ranch & Camping Sites
- Retail & Warehouse (for a specific direction)
- Golf Course



## Layer 2 Wireless Client Isolation

Wireless Client Isolation prevents communication between WLAN clients and other local network resources. L2 Wireless Client Isolation function isolates wireless client to communicate with other clients from all hosts on the same subnet, basically create the virtual network per client.



## Traffic Shaping

Limiting bandwidth per user and per SSID allows administrator to manage, control the traffic efficiency. As well as prevent bandwidth are occupied by the slower client devices. It brings better wireless client user experience.

