

ezMaster

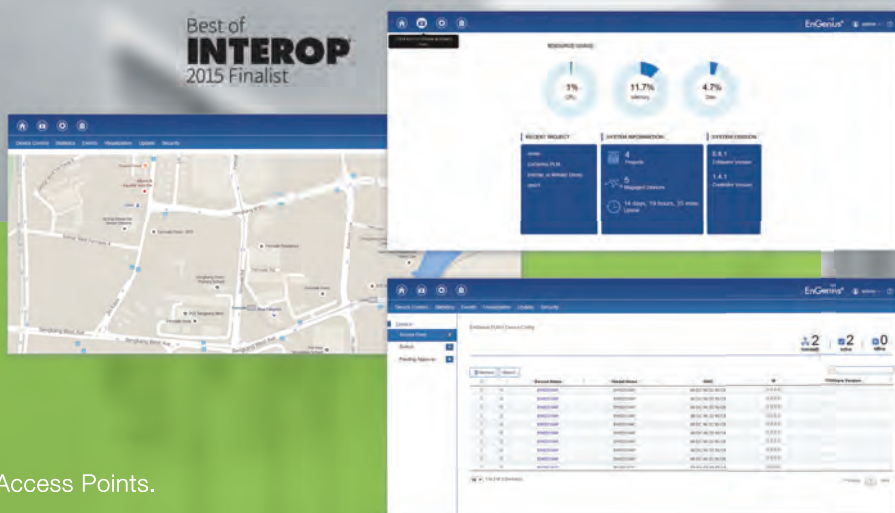
Distributed Network Management Solution

Best of
INTEROP
2015 Finalist

Today's networks must be as flexible, robust and effective as the organizations they serve. Often they comprise different buildings, business units, infrastructures, sizes and topologies. These distributed networks can place an enormous burden on in-house IT personnel or managed services providers seeking to install, configure, provision, manage, monitor and upgrade a potentially vast collection of Switches and Access Points.

Fortunately EnGenius® has the answer: our Neutron Series Distributed Network Management Solution featuring ezMaster.

Our ezMaster Network Management Platform, together with Neutron Switches and Access Points (APs), are a fully integrated solution offering breakthrough centralized WLAN management with Tier I features, but at an incredibly affordable price point—with no licensing or subscription fees.



The Neutron Series | Enterprise Class Distributed Network Management Solution

Centralized Management

- Configure, Managed & Monitor 1,000+ Neutron Devices
- Cross-Network AP Management
- AP Group Configuration

Access Point Configuration & Management

- Auto Channel Selection
- Auto Tx Power
- Background Scanning
- Band Steering (Auto Band Steering & Band Balancing)
- Client Isolation
- Client Limiting
- Fast Roaming
- L2 Isolation
- LED On/Off Control
- Multiple SSID
- RSSI Threshold
- Secure Guest Network
- Traffic Shaping
- VLAN Isolation
- VLAN Tag

Comprehensive Monitoring

- Device Status Monitoring
- Floor Plan View
- Map View
- Rogue AP Detection
- System Status Monitoring
- Visual Topology View
- Wireless Client Monitoring
- Wireless Coverage View
- Wireless Traffic & Usage Statistics

Management & Maintenance

- Bulk Firmware Upgrade
- Captive Portal
- Email Alert
- Kick/Ban Clients
- One-Click Update
- Remote Logging
- Seamless Migration
- Syslog



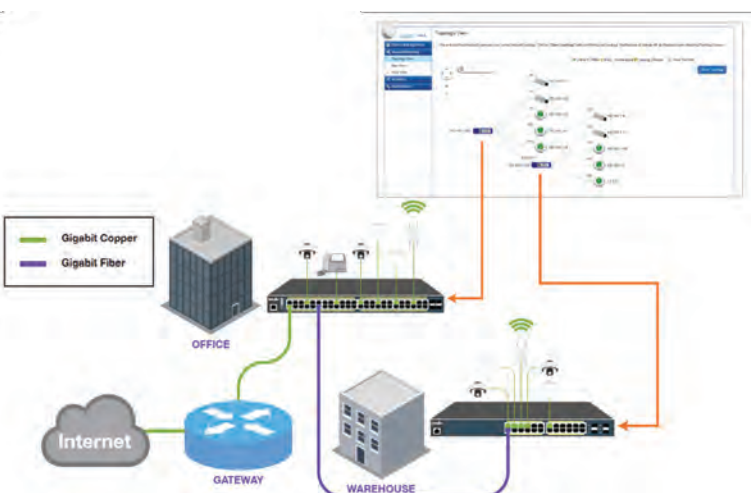
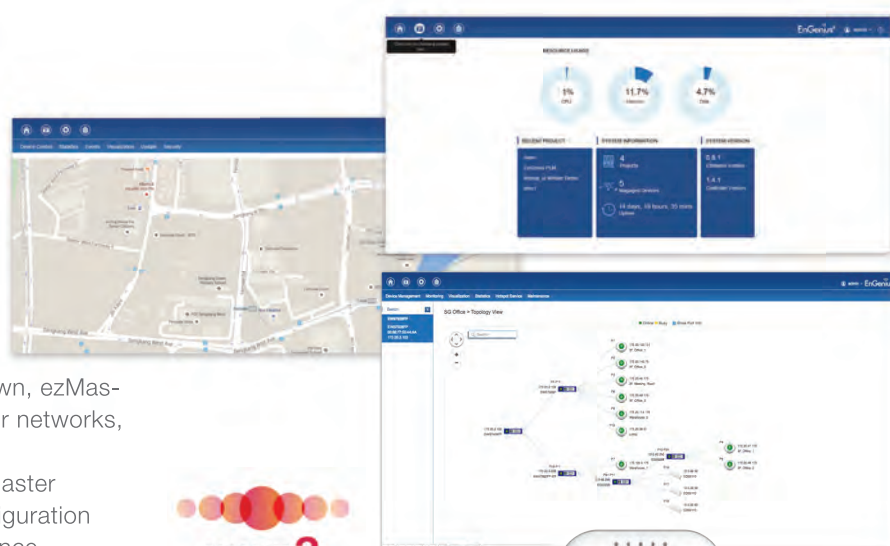
The Neutron Series | Distributed Network Management Solution

ezMaster

Simplified WLAN Management

Whether you want to manage a few or 1,000+ APs and switches on networks in different locations with different sizes and infrastructures—or 10 to 10,000 concurrent users, the EnGenius® ezMaster Network Management Platform makes it easy. How? Through centralized bulk configuration, provisioning and monitoring, a comprehensive at-a-glance network dashboard, rich analytics and reporting, and much more.

If EnGenius® Neutron Series Switches and APs are the brawn, ezMaster is the brain giving you total control over your network, or networks, no matter how diverse or geographically distributed. Deployed on a local or remote server—or in the cloud, ezMaster lowers total operating costs by speeding deployment, configuration and monitoring of an entire network with minimal IT assistance.



Controller Switch

Industry First-Ever Smart Switch to Redefine Network Management

Remotely manage Neutron Access Points, Switches, and IP Camera as through ezMaster Network Management Software. Centrally manage hundreds of Neutron devices across the network regardless of its size or location with no licensing or subscription fees.

Intelligent troubleshooting makes it easy to zoom in on problem APs by automatically verifying the route between devices, and providing a solution to solve the issue.

Available in 8, 24 and 48 port models, each Neutron Series switch can also act as a wireless network controller, giving IT administrators visibility into all Neutron Series APs. This allows them to be grouped into clusters with the same settings and policies applied automatically.

EnGenius® Neutron Series switches can deliver up to 30 watts per port to power devices like APs, IP cameras, and VoIP (Voice-over-IP) phone systems. They offer power-over-Ethernet (PoE) support for installations in hard to reach places, as well as SFP slots for longer fiber uplinks.



Managed Access Point

Ideal for Versatile Indoor and Outdoor Applications

Designed for large-scale indoor or outdoor use, Neutron Series Access Points offer high, reliable data rates—from affordable single band 11n to high performance 3x3 dual band 11ac, all with Power-over-Ethernet (PoE) convenience. These high-performance yet affordable APs can also be deployed either as a standalone device (Fat AP), or managed centrally by management entities in each distributed network.

IT managers or network administrators have the option to configure Neutron Access Points in clusters with identical settings and change those settings or upgrade firmware simultaneously after deployment.

Get realtime or historical visibility of the traffic being handled by the deployed Neutron Series Access Points, allowing you to identify any breaches in security, any abnormalities in the wireless network, or any particular client device that may be using an inordinate amount of bandwidth.

While EnGenius Neutron Series Indoor Access Points offer the flexibility of a wall or ceiling-mount option, our Outdoor Access Points feature up to IP68 rated housings to withstand even the harshest environmental conditions.

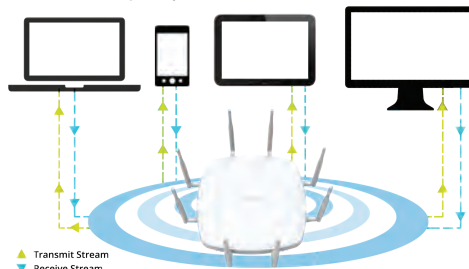
Neutron Series Product & Technology Highlights

1 Ultra-Fast Future Proof & Crowd Proof Networks

Delivers the highest available speeds for Wi-Fi devices reaching 2.5Gbps



Four Spatial streams and dual-concurrent MU-MIMO radio operation sends beams to multiple users simultaneously, creating increased network capacity.



Intelligent Wi-Fi and Beamforming technology focus signals directly to client devices, providing optimal, reliable reception even in densely crowded environments.



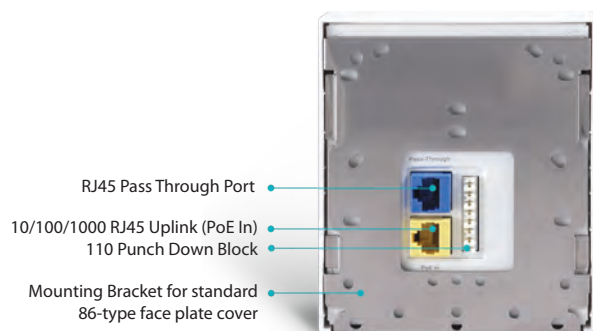
2 EnGenius Wireless Mesh

Simple to deploy and create a mesh network by the Neutron controller or ezMaster in minutes. Once plugged into any power source, the EnGenius mesh devices automatically optimizes routes between wireless mesh devices and creates a truly adaptive mesh infrastructure with all system. As the wireless environment changes, such as the addition of a new node or link broken, data paths are re-evaluated, and the mesh network self-tunes automatically to maintain its performance. All self-tuning processes are dynamic, occurring in the background and in real time.

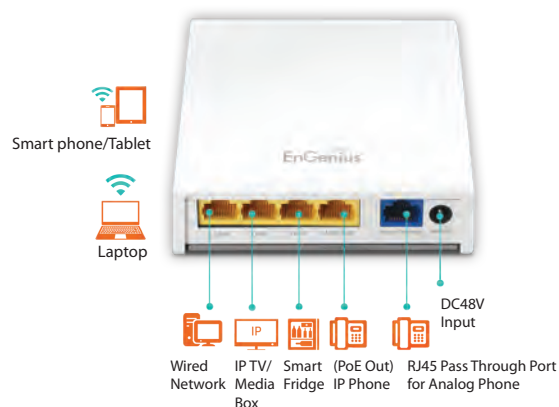
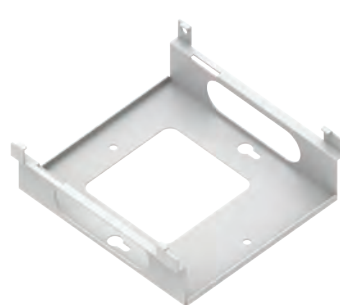


3 Wall Plate Access Points

All-in-One Communication "hub" for In-room Wireless Connectivity



Optional Bracket to mount EnGenius wall plate AP where there is no junction box available for mounting



4 AP MeshCam

Wi-Fi Hotspot



Wi-Fi Surveillance

EWS1025CAM

Overcome Wiring Challenges with Mesh & Power-Over-Ethernet

Extend wireless access to larger areas without running cable to each AP. Employ auto-sensing mesh networking to add devices quickly, optimize routes between units, and self-heal in the event a network node is down. Power each MeshCam via a single Ethernet cable to an 802.3at/af PoE Switch, injector or a CD power input.

Simple, Reliable & Cost Effective Network Controller Solutions



Scalable

- Complete scalability regardless of project size
- Easily deploy and manage unlimited APs and unlimited number of networks



Flexible

- Centrally manage unlimited APs and switches locally, remotely or via the Cloud.
- Comprehensive product portfolio for flexible deployment



Affordable

- Lower Capital & Operating Expenses
- No hidden cost. No subscription & Licensing Fee
- Enterprise grade at affordable budget

Designed for :



Managed Service Provider (MSP)



Education



Healthcare



Hotel Chain



Retail Chain

1

Smart Hotel Wi-Fi Planning & Solution



The EnGenius Solution

- ✓ Wide range of product portfolio for resort / hotel Wi-Fi deployment.
- ✓ Intelligent network management platform.
- ✓ Exceptional coverage and reliable Connectivity
- ✓ Scalable and expandable without additional cost e.g subscription fee, extra hardware upgrade and licensing fee.

Recommended Models

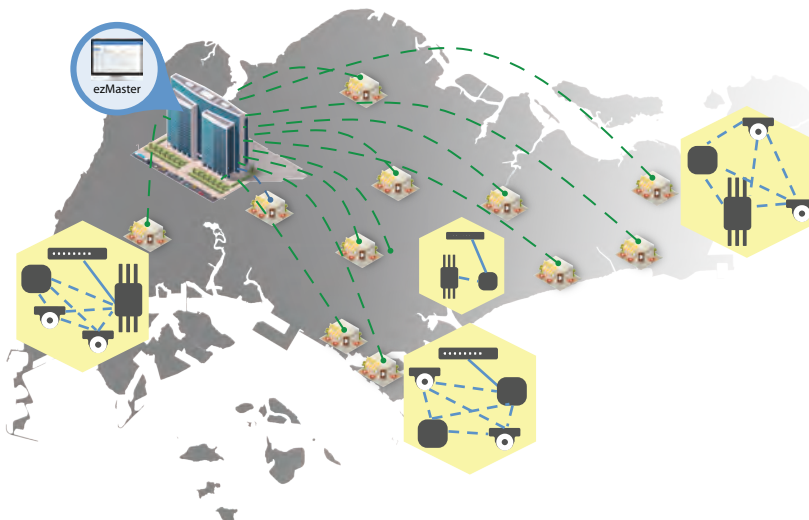
Indoors : EWS300AP, EWS360AP, EWS510AP

Outdoors : EWS660AP, EWS860AP

Management Platform : ezMaster, EWS1200-28TFP

2

Smart Retail Wi-Fi Planning & Solution



The EnGenius Solution

- ✓ Licensed-Free ezMaster to seamlessly manage multiple sites
- ✓ Graphical monitoring for each group
- ✓ Email push alerts for network issues
- ✓ Lower Capital & Operating Expenses
- ✓ Tying customer loyalty with Wi-Fi